

**VALPRO COMMERCIAL REFRIGERATION**

203 Kelsey Ln., Building G

Tampa, FL 33619

813-502-0300

Toll Free 1-888-VALPRO-8

www.ValproRefrigeration.comsales@ValproRefrigeration.com

PROJECT:

MODEL #:

ITEM #:

QTY:

AVAILABLE W/H:

APPROVAL:

DIRECT DRAW BEER DISPENSER 24" MODEL: VPBD1

We are proud to introduce the beautifully constructed **Valpro VPBD1 direct draw beer cooler**. All our bar refrigeration equipment are manufactured with uncompromising quality, energy efficient technology, and standard premium features built in. All our direct draw beer coolers have full stainless steel interiors, solid foamed stainless steel tops with integrated drip tray drain. Our heavy duty commercial construction will provide many years of worry free service and delivers cost saving eco-friendly energy efficiency with more affordable running costs. This portable unit utilizes natural hydrocarbon R600A refrigerant as an environmentally responsible choice having low global warming potential and no potential for ozone depletion. All Valpro products are manufactured under strict ISO9001 standards for quality assurance, and to consistently deliver to our customers products that satisfy all expectations. All our products are operated, extensively monitored, and undergo rigorous inspection prior to packaging and shipping.

KEY FEATURES

- Solid foamed stainless steel counter top with integrated drip tray drain
- Full 304 stainless steel interior
- Attractive black powder-matted galvanized steel exterior
- Self closing door with key lock
- Snap-in magnetic door gasket removable and replaceable without tools for ease of cleaning
- Cooled (cold air channeled) and insulated 3" diameter beer column for uniform beer temperature and reduced foaming for a perfect pour
- Single faucet on polished stainless steel tower
- Designed to hold 1 half barrel keg (15.5 gal.)
- Standard 2.5" wheels, make it easy to maneuver and clean underneath
- High density foamed in place CFC free insulation
- Over sized balanced refrigeration system uses environmentally friendly R600a hydrocarbon refrigerant with low GWP and zero ozone depletion
- Forced air cooling with large fan motor and fan blades for better air circulation
- Electronic thermostat digitally controlled temperature system maintains optimum temperature with easily viewed LED display
- ETL sanitary certified to NSF Standard 7



Intertek



Intertek

WARRANTY
2 YEAR Parts & Labor
5 YEAR Compressor* Compressor warranty 2 year parts & labor / 3 additional year warranty compressor part only



Model:

VPBD1

24" Direct Draw Beer Dispenser

1 Tower - 1 Tap

Technical Data

Dimensional Data

Exterior Dimensions	24.1"W x 29.9"D x 33.9"H
Keg Capacity	1 Half Barrel (15.5 gal.)
Storage Capacity Cu. ft	7.2
Crated Weight	161 lbs.
Shipping Dimensions	26.2"W x 34.6"D x 43.7"H

Refrigeration Data

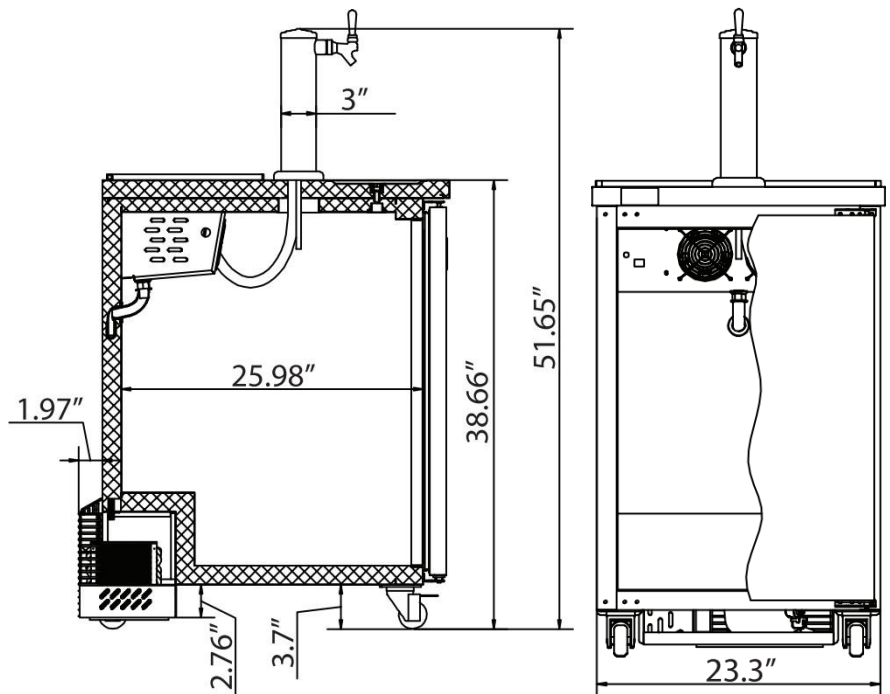
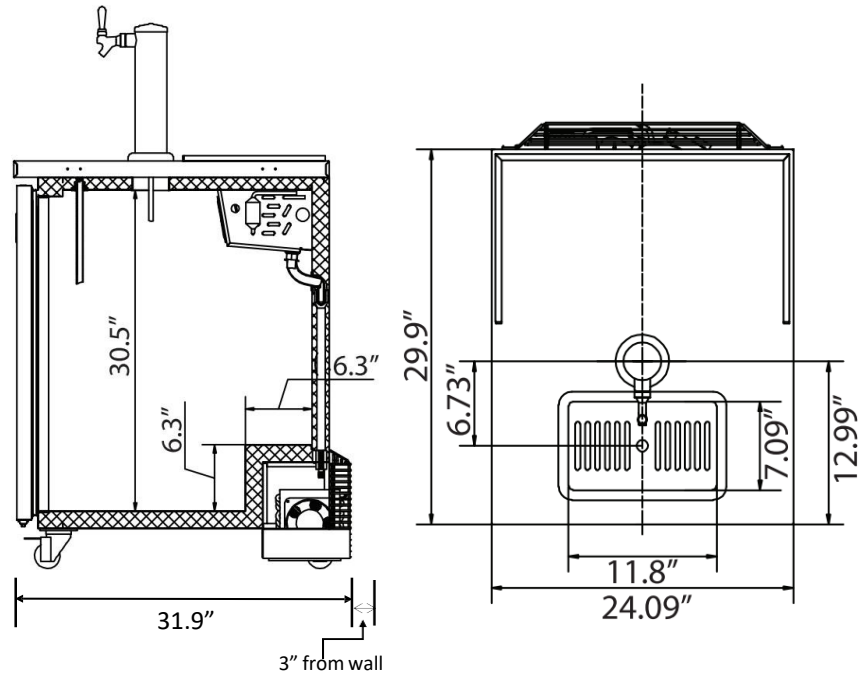
Temperature Range	33°F - 41°F
Refrigerant	R600a
Refrigerating System	Capillary Tube
Temperature Controller	Digital
Horsepower	1/8
Evaporator/Condenser	Aluminum + Copper

Construction Data

Exterior Material	Black Powder Coat Steel
Interior Floor Material	304 Stainless Steel
Interior Wall Material	304 Stainless Steel
Insulation	CFC Free Polyurethane
Doors	1 Hinged
Cooled Insulated Columns	1
Faucets	1

Electrical Data

Amps	2.2
Voltage/Frequency/Phase	115V/60Hz/1
Plug Type	NEMA 5-15P
Electrical Cord Length	8.2 ft.



Intertek



Intertek

Due to periodic changes in designs, procedures and regulations the specifications in these sheets are subject to change without notice. Ver. 2021

Valpro Commercial Refrigeration
203 Kelsey Ln., Building G
Tampa, FL 33619



Tel: 813-502-0300
1-888-VALPRO-8
www.valprorefrigeration.com

**VALPRO COMMERCIAL REFRIGERATION**

203 Kelsey Ln., Building G

Tampa, FL 33619

813-502-0300

Toll Free 1-888-VALPRO-8

www.ValproRefrigeration.comsales@ValproRefrigeration.com

PROJECT:

MODEL #:

ITEM #:

QTY:

AVAILABLE W/H:

APPROVAL:

DIRECT DRAW BEER DISPENSER 49" MODEL: VPBD2-2

We are proud to introduce the beautifully constructed **Valpro VPBD2-2 direct draw beer cooler**. All our bar refrigeration equipment are manufactured with uncompromising quality, energy efficient technology, and standard premium features built in. All our direct draw beer coolers are designed to accommodate a variety of beer kegs, and have full stainless steel interiors, solid foamed stainless steel tops with integrated drip tray drain. Our heavy duty commercial construction will provide many years of worry free service and delivers cost saving eco-friendly energy efficiency with more affordable running costs. This unit utilizes natural hydrocarbon R290 refrigerant as an environmentally responsible choice having low global warming potential and no potential for ozone depletion. All Valpro products are manufactured under strict ISO9001 standards for quality assurance, and to consistently deliver to our customers products that satisfy all expectations. All our products are operated, extensively monitored, and undergo rigorous inspection prior to packaging and shipping.

**WARRANTY**
2 YEAR Parts & Labor
5 YEAR Compressor* Compressor warranty 2 year parts & labor / 3 additional year warranty compressor part only**FEATURES**

- Solid foamed stainless steel counter top with integrated drip tray drain
- Full stainless steel interior
- LED cabinet lighting
- Attractive black powder-matted galvanized steel exterior
- Self closing doors with key locks
- Snap-in magnetic door gaskets removable and replaceable without tools for ease of cleaning
- Two cooled (cold air channeled) and insulated 3" diameter beer columns for uniform beer temperature and reduced foaming for a perfect pour
- One faucet on each polished stainless steel tower
- Designed to hold a variety of kegs, will hold 2 half barrel kegs
- Standard 4" casters, make it easy to maneuver and clean underneath
- High density foamed in place CFC free insulation
- Over sized balanced refrigeration system uses environmentally friendly R290 hydrocarbon refrigerant with low GWP and zero ozone depletion
- Side mounted evaporator system
- Forced air cooling with large fan motor and fan blades for better air circulation
- Front mounted electronic thermostat digitally controlled temperature system maintains optimum temperature with easily viewed LED display
- ETL sanitary certified to NSF Standard 7



Model:

VPBD2-2

49" Direct Draw Beer Dispenser

2 Towers - 1 Tap Each Tower

Technical Data

Dimensional Data

Exterior Dimensions	49.1"W x 24.4"D x 36.2"H
Keg Capacity	Variety, will hold 2 Half Barrels
Storage Capacity Cu. ft.	10.45
Crated Weight	267 lbs.
Shipping Dimensions	50.6"W x 26.7"D x 44.5"H

Refrigeration Data

Temperature Range	33°F - 41°F
Refrigerant	R290
Refrigerating System	Capillary Tube
Temperature Controller	Digital
Horsepower	2/5
Evaporator/Condenser	Aluminum + Copper
Condensing Unit	Side Mount

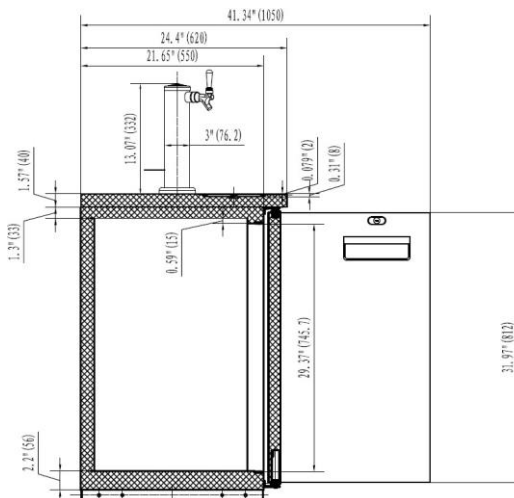
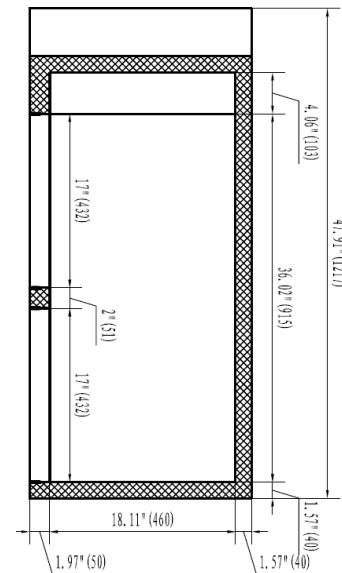
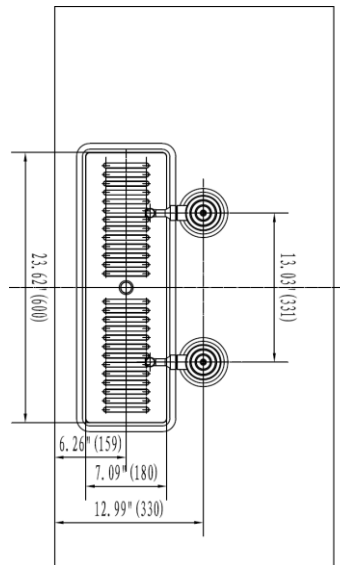
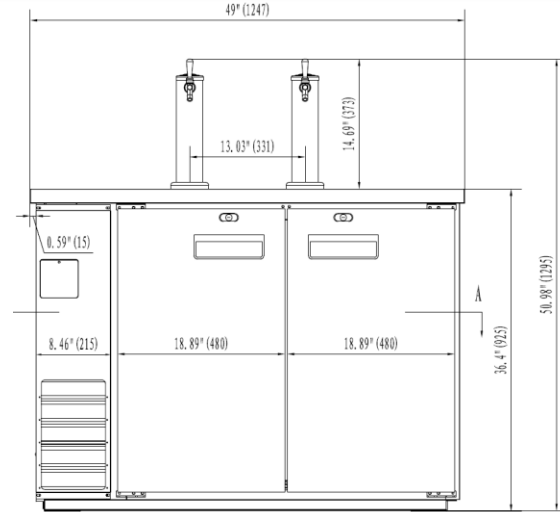
Construction Data

Exterior Material	Black Powder Coat Steel
Interior Floor Material	304 Stainless Steel
Interior Wall Material	304 Stainless Steel
Insulation	CFC Free Polyurethane
Doors	2 Hinged
Cooled Insulated Columns	2
Faucets	2 (One/Tower)

Electrical Data

Interior Lighting	Efficient LED
Amps	3
Voltage/Frequency/Phase	115V/60Hz/1
Plug Type	NEMA 5-15P
Electrical Cord Length	8.2 ft.

Due to periodic changes in designs, procedures and regulations the specifications in these sheets are subject to change without notice. Ver. 2012



Intertek



Intertek

Valpro Commercial Refrigeration
203 Kelsey Ln., Building G
Tampa, FL 33619



Tel: 813-502-0300
1-888-VALPRO-8
www.valprorefrigeration.com

**VALPRO COMMERCIAL REFRIGERATION**

203 Kelsey Ln., Building G

Tampa, FL 33619

813-502-0300

Toll Free 1-888-VALPRO-8

www.ValproRefrigeration.comsales@ValproRefrigeration.com

PROJECT:

MODEL #:

ITEM #:

QTY:

AVAILABLE W/H:

APPROVAL:

DIRECT DRAW BEER DISPENSER 60" MODEL: VPBD3-1

We are proud to introduce the beautifully constructed **Valpro VPBD3-1 direct draw beer cooler**. All our bar refrigeration equipment are manufactured with uncompromising quality, energy efficient technology, and standard premium features built in. All our direct draw beer coolers are designed to accommodate a variety of beer kegs, and have full stainless steel interiors, solid foamed stainless steel tops with integrated drip tray drain. Our heavy duty commercial construction will provide many years of worry free service and delivers cost saving eco-friendly energy efficiency with more affordable running costs. This unit utilizes natural hydrocarbon R290 refrigerant as an environmentally responsible choice having low global warming potential and no potential for ozone depletion. All Valpro products are manufactured under strict ISO9001 standards for quality assurance, and to consistently deliver to our customers products that satisfy all expectations. All our products are operated, extensively monitored, and undergo rigorous inspection prior to packaging and shipping.

**WARRANTY**
2 YEAR Parts & Labor
5 YEAR Compressor* Compressor warranty 2 year parts & labor / 3 additional year warranty compressor part only**FEATURES**

- Solid foamed stainless steel counter top with integrated drip tray drain
- Full 304 stainless steel interior
- LED cabinet lighting
- Attractive black powder-matted galvanized steel exterior
- Self closing doors with key locks
- Snap-in magnetic door gaskets removable and replaceable without tools for ease of cleaning
- Cooled (cold air channeled) and insulated 3" diameter beer column for uniform beer temperature and reduced foaming for a perfect pour
- Two faucets on polished stainless steel tower
- Designed to hold a variety of kegs, will hold 2 half barrel kegs
- Standard 4" casters, make it easy to maneuver and clean underneath
- High density foamed in place CFC free insulation
- Over sized balanced refrigeration system uses environmentally friendly R290 hydrocarbon refrigerant with low GWP and zero ozone depletion
- Side mounted evaporator system
- Forced air cooling with large fan motor and fan blades for better air circulation
- Front mounted electronic thermostat digitally controlled temperature system maintains optimum temperature with easily viewed LED display
- ETL sanitary certified to NSF Standard 7



Model:

VPBD3-1

60" Direct Draw Beer Dispenser

1 Tower - 2 Tap

Technical Data

Dimensional Data

Exterior Dimensions	61.1"W x 24.4"D x 36.2"H
Keg Capacity	Variety, will hold 2 Half Barrels
Storage Capacity Cu. ft.	14.16
Crated Weight	302 lbs.
Shipping Dimensions	62.6"W x 26.7"D x 44.5"H

Refrigeration Data

Temperature Range	33°F - 41°F
Refrigerant	R290
Refrigerating System	Capillary Tube
Temperature Controller	Digital
Horsepower	2/5
Evaporator/Condenser	Aluminum + Copper
Condensing Unit	Side Mount

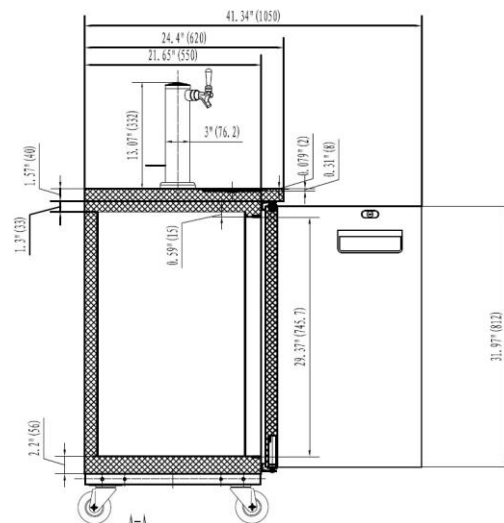
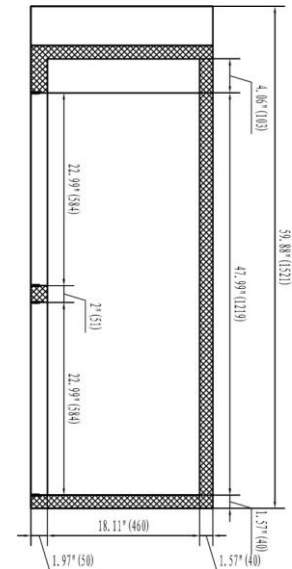
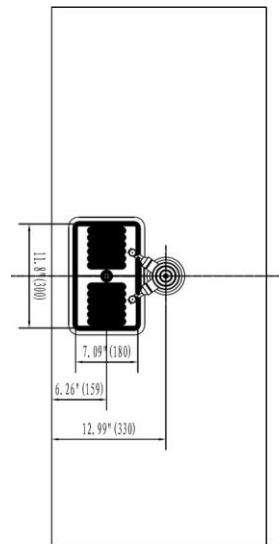
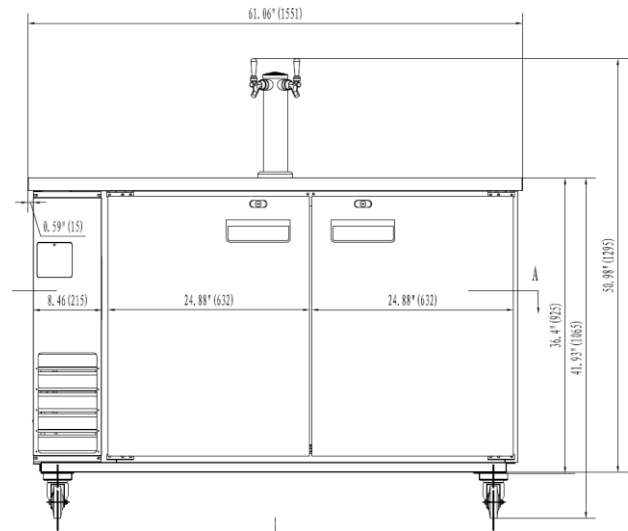
Construction Data

Exterior Material	Black Powder Coat Steel
Interior Floor Material	304 Stainless Steel
Interior Wall Material	304 Stainless Steel
Insulation	CFC Free Polyurethane
Doors	2 Hinged
Cooled Insulated Columns	1
Faucets	2

Electrical Data

Interior Lighting	Efficient LED
Amps	3
Voltage/Frequency/Phase	115V/60Hz/1
Plug Type	NEMA 5-15P
Electrical Cord Length	8.2 ft.

Due to periodic changes in designs, procedures and regulations the specifications in these sheets are subject to change without notice. Ver. 2021



Intertek



Intertek

Valpro Commercial Refrigeration
203 Kelsey Ln., Building G
Tampa, FL 33619



Tel: 813-502-0300
1-888-VALPRO-8
www.valprorefrigeration.com